

CUNNINGHAM COURT, MAIDA VALE, LONDON, W9

£6,000 PER CALENDAR

Goldman Greg are delighted to offer a beautifully presented three bedroom, two bathroom apartment situated within an attractive period mansion block on the corner of Blomfield Road. This desirable property offers bright and spacious accommodation throughout, featuring a stunning double reception room with direct access to private balconies.

The apartment comprises a generous principal bedroom with a large en-suite bathroom, two further double bedrooms (one benefiting from an en-suite shower room), a modern, fully fitted kitchen, and a contemporary family bathroom.

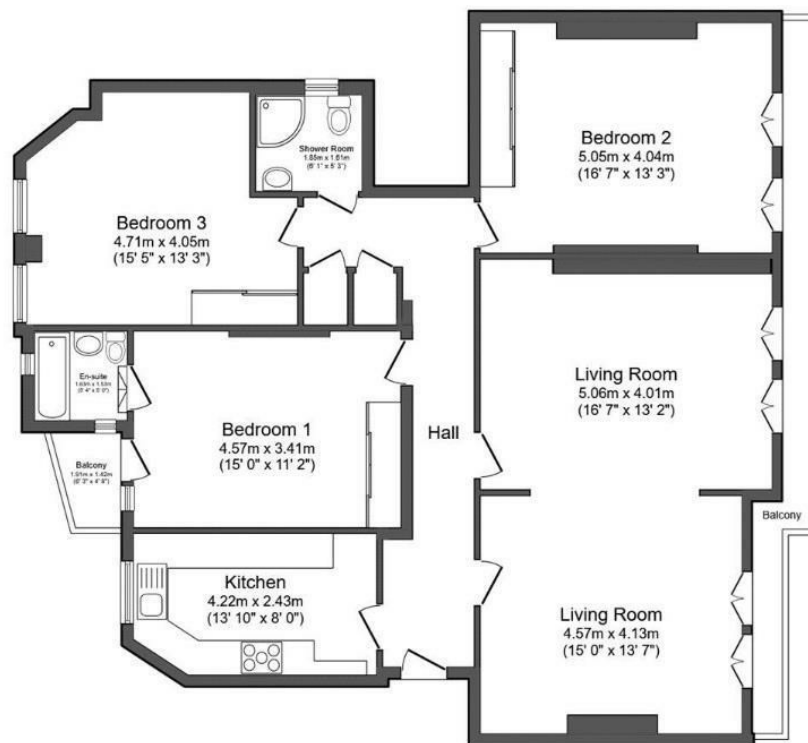
Ideally located for easy access to Little Venice, St John's Wood, and the West End, the property is conveniently positioned near Warwick Avenue Underground Station (Bakerloo Line).

Offered furnished and available immediately, viewings are highly recommended.

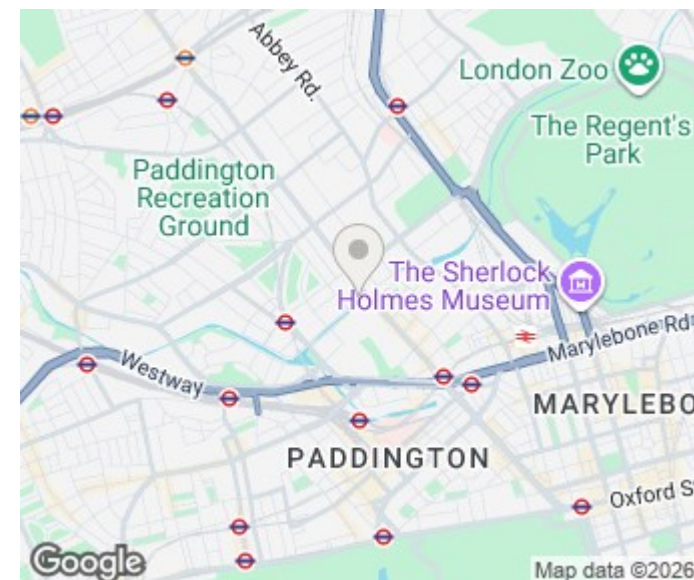


Goldman Greg

Approximate Area = 126.0 m² (1,356 sq.ft.) approx



This floor plan is for illustrative purposes only. It is not drawn to scale. Any measurements, floor areas (including any total floor area), openings and orientation are approximate. No details are guaranteed, they cannot be relied upon for any purpose and they do not form part of any agreement. No liability is taken for any error, omission or misstatement. A party must rely upon its own inspection(s). Powered by www.PropertyBox.io



Energy Efficiency Rating		
	Current	Potential
Very energy efficient - lower running costs		
(92 plus) A		
(81-91) B		
(69-80) C		
(55-68) D		
(39-54) E		
(21-38) F		
(1-20) G		
Not energy efficient - higher running costs		
England & Wales	EU Directive 2002/91/EC	

Agents Note: Whilst every care has been taken to prepare these particulars, they are for guidance purposes only. All measurements are approximate and are for general guidance purposes only and whilst every care has been taken to ensure their accuracy, they should not be relied upon and potential buyers/tenants are advised to recheck the measurements

Goldman Greg
143 Leman Street
London
E1 8EY

02079770018
leads@goldmangreg.co.uk
www.goldmangreg.co.uk

